

Configuring MicroStation and Controlling Standards

Mid-America Cadd Community
Summer Conference 2013

Presented By: Jack Riley

Agenda

- Use Configurations to simplify administration
- Using the Correct Standards
- Connect your Standards to MicroStation Tools
- Organize your Tools to make sense to You
- Get fancy with Named Expressions

Important Variables

- **\$(MS_DGNLIBLIST)**
 - Loads Levels, Detailing Styles, Element Templates, etc...
- **\$(MS_GUIDGNLIBLIST)**
 - Loads custom interfaces

Setting the Standard

An Element Template is a predefined set of rules that sets the properties of an element. These properties include; level, color, style and weight. Additional properties include cell name, terrain models, detail callouts, etc...Think of it as a streamlined Settings Manager.

Basics of Element Templates

- Element Templates can only be added to the active File
- Create DGNLIBs to house your Element Templates
- Create Template Groups to help organize your data
- Create an Element Template and set your properties

Reusing Legacy Data

- Settings Manager resources (STG) can be imported directly into Element Templates
- Barmenu definitions (MDF) can be reused, but...
- MDFs must be converted to XML for import
- Search the Bentley Forums for MDF2XML.exe
- Reorganize your data as needed and adjust your template properties to meet your current needs

DEMONSTRATION

Building Your Toolbox

A tool is an icon in MicroStation that is used to perform a drawing function. A grouping of tools is called a Tool Box. Tools in MicroStation are stored within a DGNLIB.

Reuse Existing Tools

- Create a new Tool Box in your DGNLIB
- Locate and copy an existing Tool from Application Tools
- Paste in your Tool Box
- Change settings or associate an Element Template

Creating New Tools

- Create a new Tool Box in your DGNLIB
- Create a new Tool in your Tool Box
- Add a key-in command (existing MicroStation command or load an MDL or VBA application)
- Leave the key-in command set to Null to control settings
- Change additional settings and/or associate an Element Template

Creating Icons

- When working with MicroStation V8i SS2 or newer, you can reuse existing icons, “borrow” from other applications or use a third party application to create new icons
- When working with MicroStation SS3 you can follow the same process or use the new Vector Icon Task
 - Create icons from MicroStation graphics
 - Create graphics with MicroStation Solids Modeling Tools
 - Import icons from other applications, trace and modify

Custom Tasks

A Task is a set of Tools combined to expedite a process. Similar tools can be grouped together, e.g. text placement, text editing, modifying text settings, etc... A specific process can be defined, e.g. creating a sheet model, attaching references, editing title block tags, etc...

Creating Tasks

- Create a New Task under your DGNLIB
- Drag and Drop the Toolbar
- Reorder, add or delete tools as needed

Custom Workflows

A Workflow is a set of Tasks organized in the order you will utilize them in a job or project. A Workflow could be defined to organize company standards, e.g. placing standard text styles, dimensioning, detailing symbols, etc... A Workflow could be defined to help refine a design process, e.g. importing data from STAAD, attaching engineering links for supporting documentation, creating sheets, etc...

Creating Workflows

- Create a New Task under your DGNLIB
- Drag and Drop the Toolbar
- Reorder, add or delete tools as needed
- Right click on the Task, select Add and pick Treat Task as Workflow

Customizing Menus

MicroStation provides the ability to customize all menus you might need access to. This includes the main menu bar, context menus (menus that appear when you right click), view popup menus (shift + right click) and tentative popup menus (shift + left and right mouse keys).

Why Customize a Menu?

- Menus can be reorganized to facilitate unique workflows
- Custom Tools can be added for easy access
- Items can be removed if you don't want your users to have access (e.g. Workspace Configuration)
- Links can be placed for corporate standards or supporting documentation (Wikis, Blogs, etc...)

DEMONSTRATION

Named Expressions

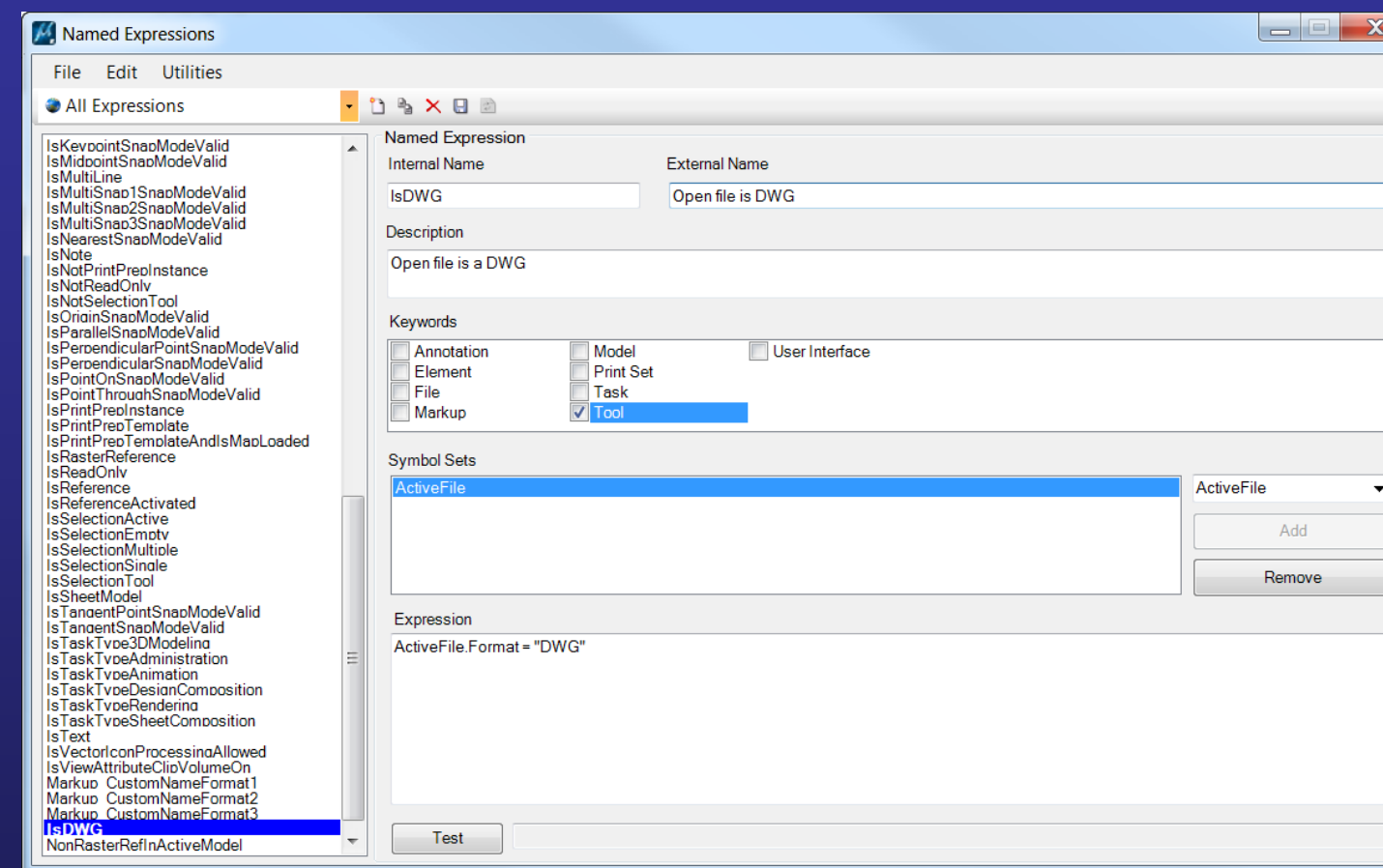
Named Expressions have the ability to acquire information from the host application; such as files, models and elements. They have the capability of performing arithmetical operations, comparisons and conditional tests.

Out of the Box

- Simple Named Expressions included in MicroStation include whether or not a file is 2D or 3D, whether or not you are working in a sheet model and whether or not an element is text
- Select a Task and add Show/Hide Test
- When the option has been added select the Named Expression you wish to associate

Build Your Own

- Define a workspace variable to be harvested by MicroStation
- Define your custom expression
- Select a Task and add Show/Hide Test
- When the option has been added select the Named Expression you wish to associate



DEMONSTRATION

Summary

- Element Templates can simplify/enforce your corporate or client standard
- Creating or customizing tools can guarantee that your standards are being accessed in your everyday workflow
- Creating custom tasks and workflows can streamline your drawing/design process
- Creating Named Expressions can make the administrators life easier

Questions

