



# Bentley Projectwise Dynamic Plot



Presented by:  
Michael Hancock



# Agenda

- Dynamic Plot explained
- Technology behind Dynamic Plot
- Benefits realized at HNTB
- Client side setup
- Administration console
- Publishing DP enabled data
- Managing redlines



## What is Dynamic Plot?

- It is a digital redline solution
- Allows you to use the same post script printer and regular paper to apply a unique dot pattern
- The technology utilizes specialized digital pens, which allow a reviewer to mark up paper documents with standard ink and simultaneously record the notations to data files.

**HNTB**

# Technology Behind the Process

## DIGITAL PEN

### Power

*Battery, 6 hours continuous use*

### Communications

*Bluetooth, USB Docking Station*

### Memory

*1 Mb, ~40 A5 pages*

### Dimensions

*157x21x18mm, 30g*

### Camera

*CMOS, Infrared, 75 images/sec*

### Durability

*3 years (Used 2x/day)*

### Identification

*Serial number, pen properties*



# Technology Behind the Process

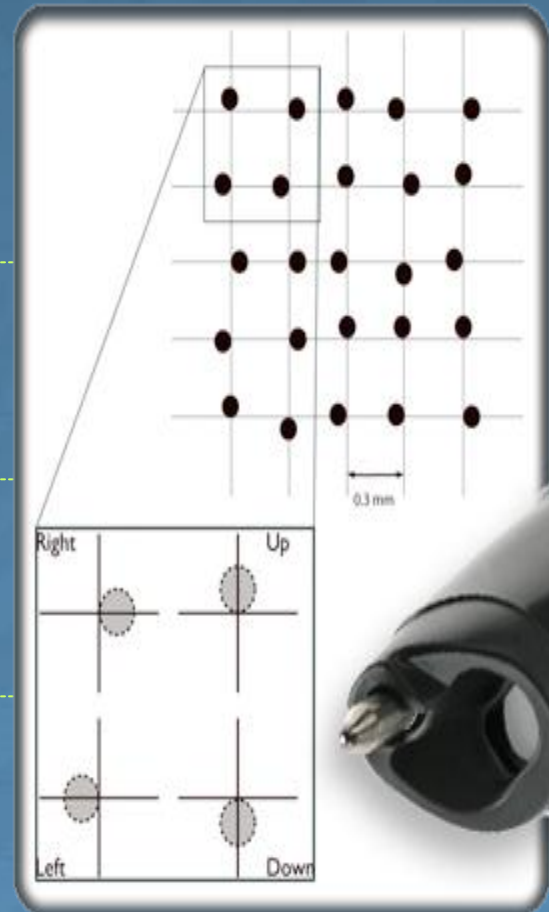
## *UNIQUE DOT PATTERN*

*Small dots (100  $\mu\text{m}$  in diameter) with a spacing of approximately 0.3 mm on a square grid.*

*Dots are slightly displaced from the grid, each dot in one of four possible positions.*

*4,722,366,482,869,645,213,696 unique combinations.*

*Displacement of the dots makes it possible to uniquely identify each pattern area.*



## Benefits

- Save time
- Improve Quality
- Reduce risk

**HNTB**

## Prerequisites & client machine setup



- Data must reside inside ProjectWise
- ProjectWise Interplot Client and Server

### Creating DP enabled plots

1. Current Pre-req pack
2. ProjectWise Client
3. ProjectWise Interplot Organizer
4. Connection to a queue on the Dynamic Plot server

### Syncing redlines

1. Current Pre-req pack
2. ProjectWise Client
3. ProjectWise Navigator
4. ProjectWise Dynamic Plot Sync

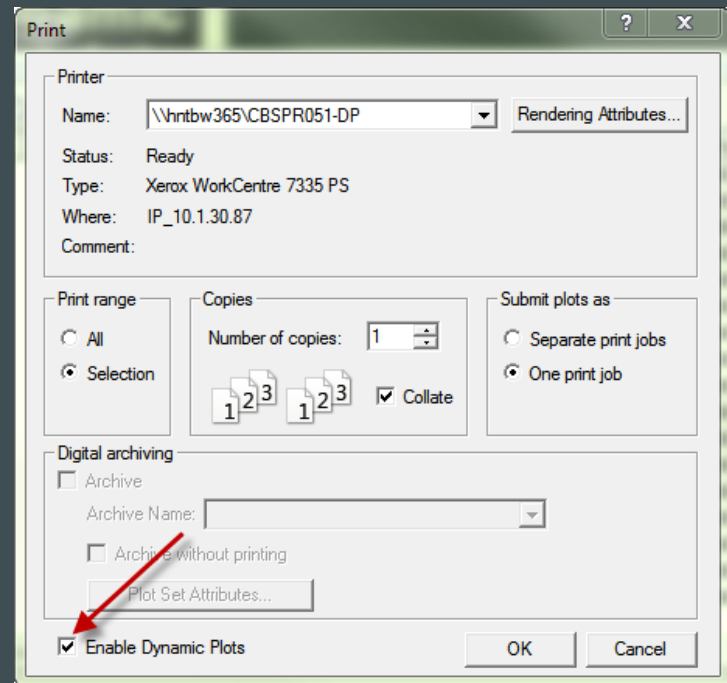
[Admin demo](#)

# Publishing Dynamic Plot enabled data directly to printer

- DP server 8.11.7.420
- DP sync 8.11.7.426

**HNTB**

- Built on existing Bentley infrastructure
- Simply check one box within the Interplot Organizer print window
- [video](#)





## Publishing Dynamic Plot enabled PDF



- Open or create an IPS just like before
- Add the attributes:
  - a) Name = REPRO\_MODE  
Value = PDF
  - b) Name = REPRO\_FOLDER  
Value = path to folder where PDF will be created

[demo](#)

# Syncing and managing redlines



## Syncing

- Connected mode
- Disconnected mode option

## Managing

- Navigator & Microstation
- PDF Acrobat
- Process marks
- PDF workflow
- MSTN/Navigator workflow

## Summary



- Dynamic Plot explained
- Technology behind Dynamic Plot
- Benefits realized at HNTB
- Client side setup
- Administration console
- Publishing DP enabled data
- Managing redlines

**Thank You**

- Thanks for attending

**HNTB**